

SEGRO PARK BERLIN AIRPORT

ALEXANDER-MEISSNER-STRASSE, 12526 BERLIN



High-quality new construction
of logistics units directly at Airport BER



Optimal connection
to A100, A113, A117, and B96a



First-class customer service
provided by our property management team

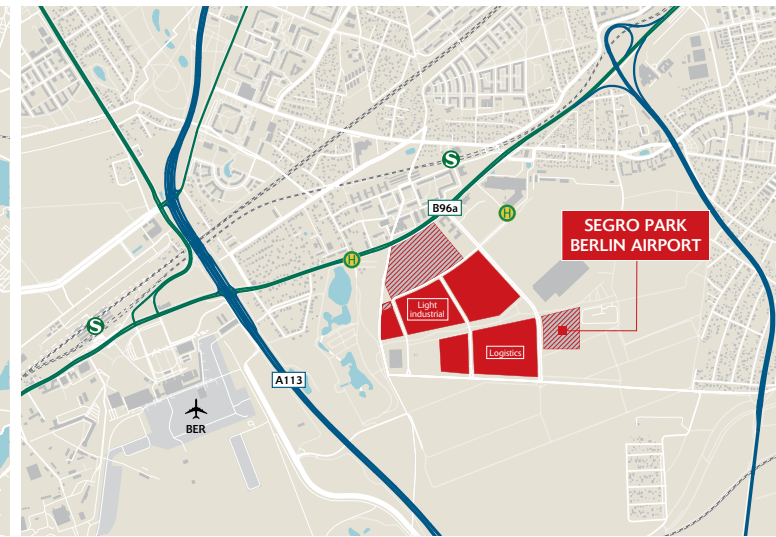
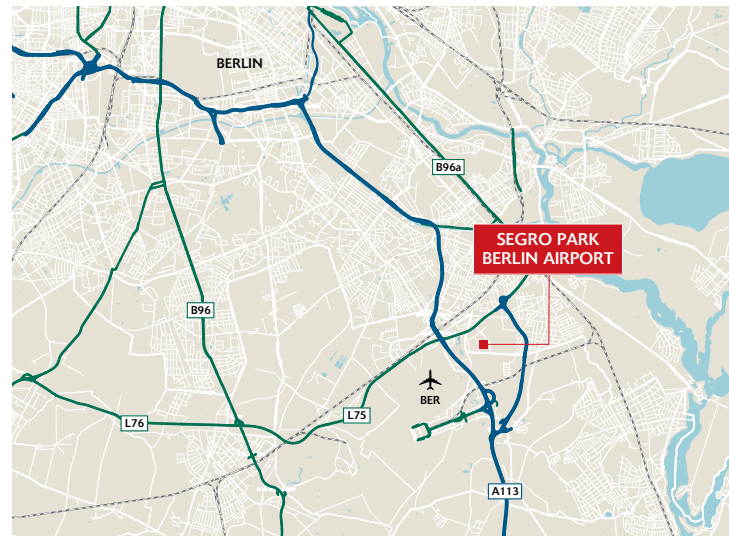
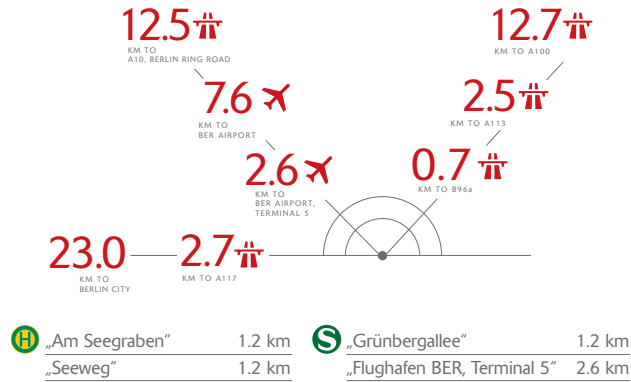


Total rental space
approximately 18,500 sqm



Expected completion:
Q3 2025

SEGRO PARK BERLIN AIRPORT



SUSTAINABLE ASPECTS

- Green electricity supply through photovoltaic system
- Charging stations for electric vehicles (20% of all car parking spaces)
- Sustainable greening concept with green roofs
- High-quality insulated building envelope (BEG 40)
- Aiming for DGNB Platinum and DGNB Climate Positive certification

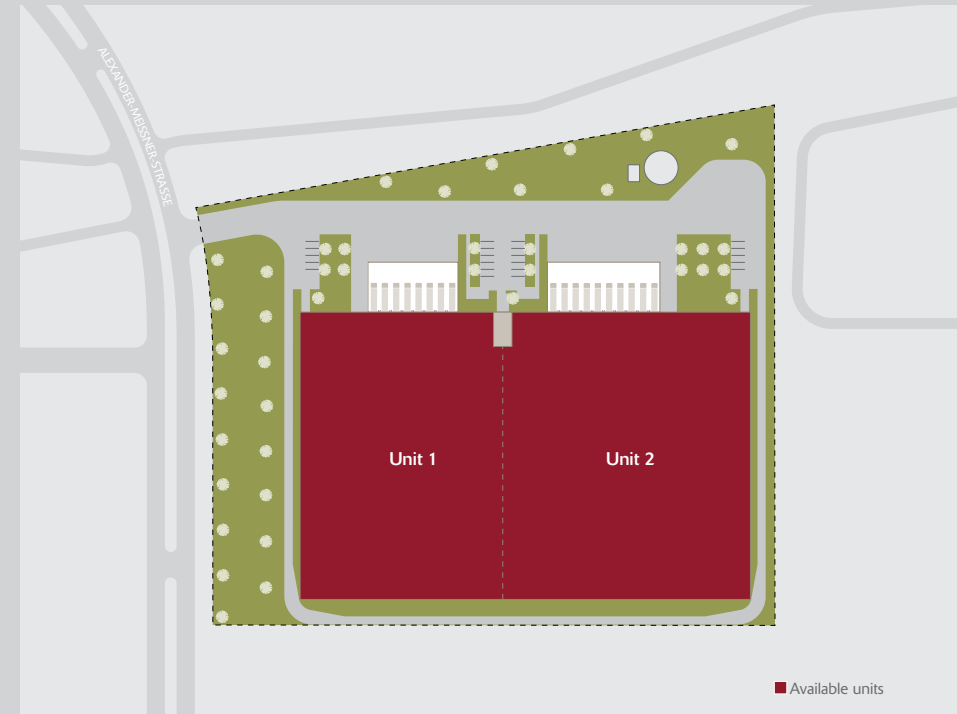
SPECIFICATIONS

- Warehouse height: 12 m clear height
- Warehouse floor:
 - Steel fiber concrete slab
 - Load capacity of 50 kN/sqm (5t) and point loads from shelf columns of 75 kN
- Doors:
 - Sectional door (4 m W x 4.5 m H) for ground-level delivery
 - 18 electro-hydraulic dock levelers (Unit 1: 8 levelers, Unit 2: 10 levelers)
- Windows: Aluminum windows with insulated glazing
- Lighting: Intelligent LED lighting systems
- Utilities:
 - Electricity and water connection per rental unit
 - Electrical protection per rental unit 63 A
 - Warehouse heating via VRF systems
 - Office heating via heat pump system
- Sprinkler system FM Global
- Office: 1 mezzanine office per rental unit (including sanitary facilities and driver registration)

FUTURE RENTAL UNITS

Unit	Warehouse	Office	Mezzanine	Total
Unit 1	7,428 sqm	162 sqm	914 sqm	8,504 sqm
Unit 2	9,071 sqm	158 sqm	1,117 sqm	10,346 sqm
Total	16,499 sqm	320 sqm	2,031 sqm	18,850 sqm

(All information is approximate)





CONTACT

SEGRO

SEGRO PARK
BERLIN AIRPORT

ALEXANDER-MEISSNER-STRASSE, 12526 BERLIN



Pauline Wolters
Manager, Development,
Light Industrial



Pauline.Wolters@segro.com



T: 0211 – 882 346 71
M: 0162 – 678 21 45



Click here for
more information



Scan here for vCard
of your contact person.



SEGRO Germany GmbH • Fichtenstraße 33 • 40233 Düsseldorf

www.SEGRO.com/berlin