

# SEGRO PARK BERLIN AIRPORT

ALEXANDER-MEISSNER-STRASSE, LUDWIG-PRANDTL-STRASSE, 12526 BERLIN



✓ State-of-the-art SEGRO Park directly adjacent to BER airport

📍 Excellent connection to motorways A113, A117 and B96a

👤 Committed to customer care

📏 Light Industrial space available from approx. 500 m<sup>2</sup>

📅 Phase 3: available September 2026  
Phase 4: available August 2026

# SEGR0 PARK BERLIN AIRPORT

12.5   
KILOMETRES TO  
A10 BERLINER RING

12.7   
KILOMETRES TO A103

7.6   
KILOMETRES TO  
BER AIRPORT

2.5   
KILOMETRES TO A113

1.9   
KILOMETRES TO  
BER AIRPORT  
TERMINAL 5

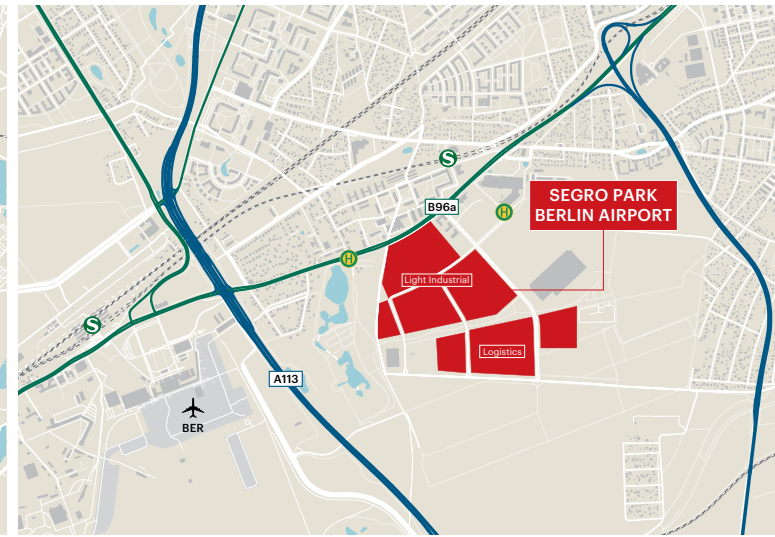
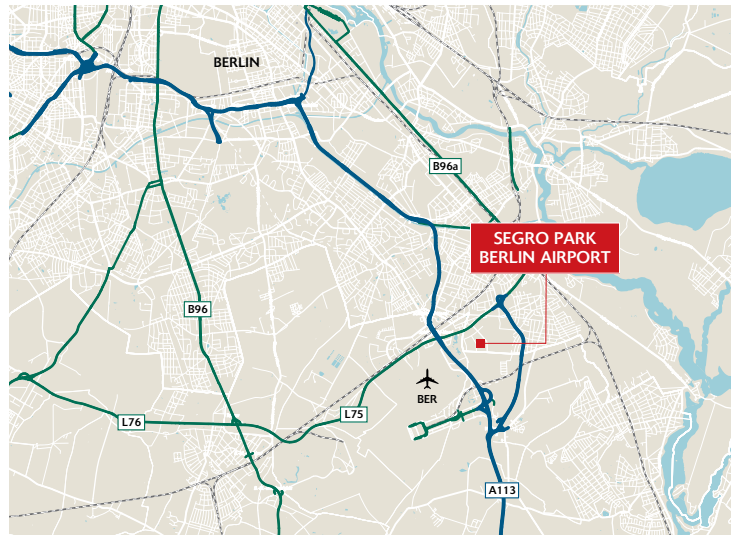
700   
METRES TO B96a

23   
KILOMETRES TO  
BERLIN CITY

2.7   
KILOMETRES TO  
A117



	„Am Seegraben“	1,2 km		„Grünbergallee“	1,2 km
	„Seeweg“	1,2 km		„BER Airport, Terminal 5“	2,6 km



## SPECIFICATIONS

- Warehouse height: 6 m clear height
- Floor load: 5t/sqm (forklifts with a maximum permitted load of 5 t/sqm)
- Each unit is equipped with 2 doors:
  - Sectional door (3 m W x 4.2 m H), for ground-level access
  - Additional loading ramps with loading door (3 m x 3 m) and electro-hydraulic dock leveller
- Windows in the warehouse area
- LED lighting
- Skylights for optimum lighting conditions and ventilation
- Energy-saving construction, DGNB certified
- Separate supply to each unit with district heating, water and electricity for optimisation of ancillary costs
- 63 A power backup for each unit; can be increased if necessary

## ACCOMMODATION

### Phase 3

Unit	Warehouse	Office	Service	Total
I1	383 sqm	-	120 sqm	503 sqm
I5	479 sqm	147 sqm	120 sqm	746 sqm
I6	318 sqm	107 sqm	80 sqm	505 sqm
<b>Total</b>	<b>1,180 sqm</b>	<b>254 sqm</b>	<b>320 sqm</b>	<b>1,754 sqm</b>

### Phase 4

Unit	Warehouse	Office	Service	Total
N2	448 sqm	145 sqm	116 sqm	709 sqm
<b>Total</b>	<b>448 sqm</b>	<b>145 sqm</b>	<b>116 sqm</b>	<b>709 sqm</b>

Phase 3: available September 2026  
Phase 4: available August 2026





CONTACT

SEGRO

SEGRO PARK

# BERLIN AIRPORT

ALEXANDER-MEISSNER-STRASSE, LUDWIG-PRANDTL-STRASSE, 12526 BERLIN



Pauline Wolters  
Associate Director,  
Development,  
Light Industrial



Pauline.Wolters@segro.com



T: 0211- 882 346 71  
M: 0162 - 678 21 45



Click here for more  
information



Scan here to get vCard  
of your contact person



SEGRO Germany GmbH · Fichtenstraße 33 · 40233 Düsseldorf

[www.SEGRO.com/berlin](http://www.SEGRO.com/berlin)