

SEGRO
PARK
COVENTRY

IT'S TIME

TO LET 139,815 SQ FT
WAREHOUSE/
INDUSTRIAL UNIT
OCCUPY Q4 2023

UNIT 4C

DETAILED
SPECIFICATION

SEGRO



UNIT 4C

SPECIFICATION SUMMARY

Warehouse

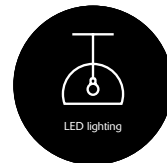
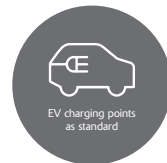
- 131,500 sq ft
- 15m to haunch
- 12 dock levellers (including 2 Euro docks) and 2 level access doors
- Internal floor slabs laid to FM2 specification - 50kn/m² floor loading
- Concrete service yards 50m deep
- 130 car parking spaces; 20% with electric vehicle charging points
- 25 year warranty for the cladding system
- 500 kVA Electric Supply

Office

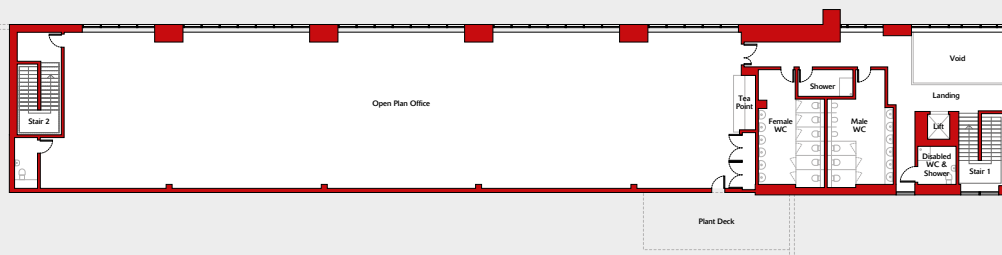
- 8,095 sq ft (with undercroft)
- Raised floors
- Suspended ceilings
- Comfort cooling
- LED lighting with PIR and perimeter daylight sensitive controls

Sustainability

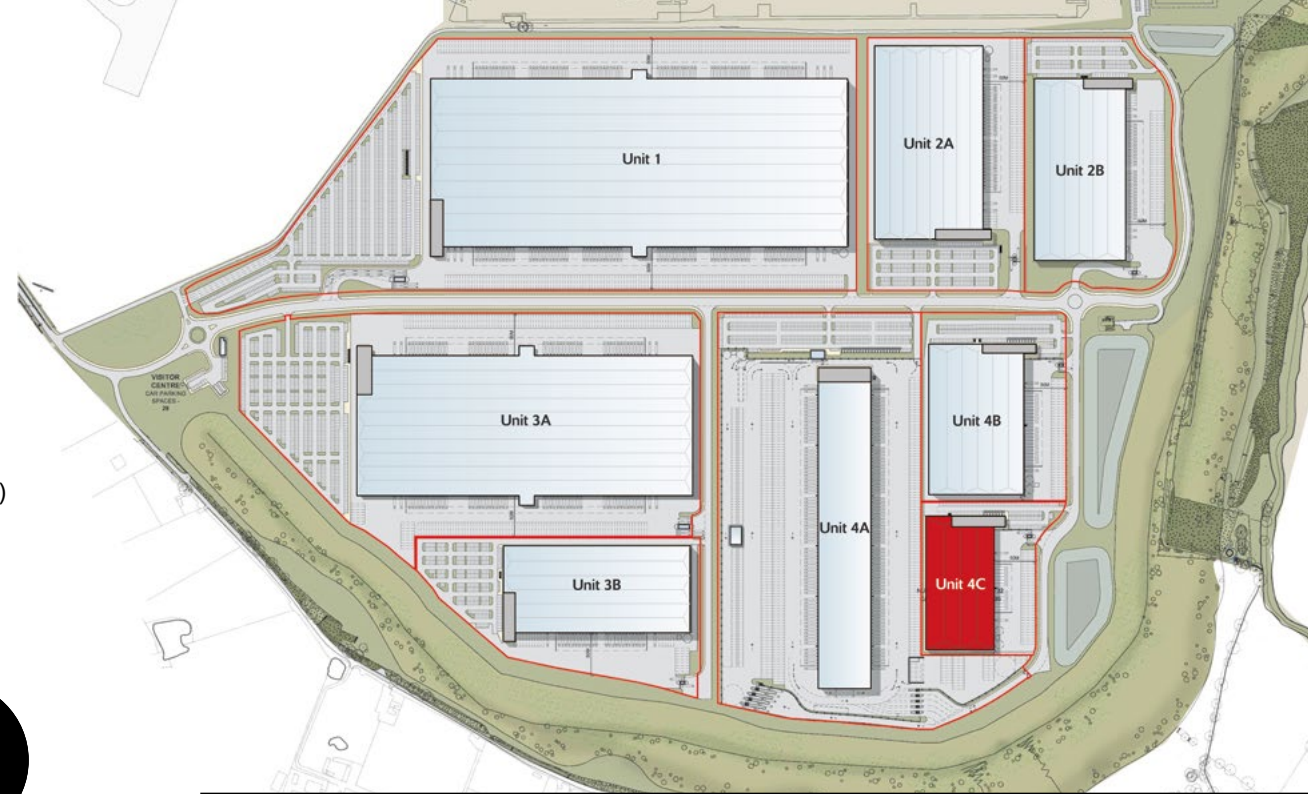
- EPC 'A' rating (targeting)
- BREEAM 'Excellent' (targeting)
- 12% rooflights
- Air leakage 2.5m³/hr/m²
- Solar thermal system
- Rain Water Harvesting



UNIT 4C FIRST FLOOR PLAN:



OTHER PLANS AVAILABLE FOR UNIT 4C: GROUND FLOOR GA PLAN & FIRST FLOOR OFFICE PLAN



Unit 4C

Warehouse	sq ft	131,500
	sq m	12,217
Offices	sq ft	8,095
	sq m	751
Plot area	Acres	6
	Ha	3
Total	sq ft	139,815
	sq m	12,989
Dock leveller doors		12
Loading doors		2
Yard depth		50m
Car parking spaces		130
HGV spaces		32

RIGHT PLACE, RIGHT TIME



Coventry City Centre	14 Mins	5.3 Miles
M69	13 Mins	7.3 Miles
M6	13 Mins	7.3 Miles
M45	15 Mins	8.9 Mile
M40	15 Mins	11.7 Miles
Birmingham Airport	22 Mins	14.1 Miles
HS2 Interchange	22 Mins	13.6 Miles

Daventry		
Rail Freight Terminal	30 Mins	19.1 Miles
Hams Hall		
Rail Freight Terminal	30 Mins	19.6 Miles
Birmingham City Centre	40 Mins	24.5 Miles
Central London	120 Mins	106 Miles
Felixstowe Port	160 Mins	150 Miles

Source. Google Maps. Distances and journey times are estimated and are subject to travel/road conditions.



About SEGRO

SEGRO is a UK Real Estate Investment Trust (REIT), listed on the London Stock Exchange and Euronext Paris, and is a leading owner, manager and developer of modern warehouses and industrial property. It owns or manages 9.6 million square metres of space (103 million square feet) valued at £21.3 billion serving customers from a wide range of industry sectors. Its properties are located in and around major cities and at key transportation hubs in the UK and in seven other European countries.

For over 100 years SEGRO has been creating the space that enables extraordinary things to happen. From modern big box warehouses, used primarily for regional, national and international distribution hubs, to urban warehousing located close to major population centres and business districts, it provides high-quality assets that allow its customers to thrive.

Enquire at segroparkcoventry.com
or please call our retained agents:



Charlie Spicer
0121 369 1167

Ranjit Gill
0121 369 1173



Richard Harman
020 3151 8648

Tom Fairlie
020 3151 8648

The SEGRO logo is the word "SEGRO" in a bold, black, sans-serif font, with the letter "O" enclosed in a white circle.