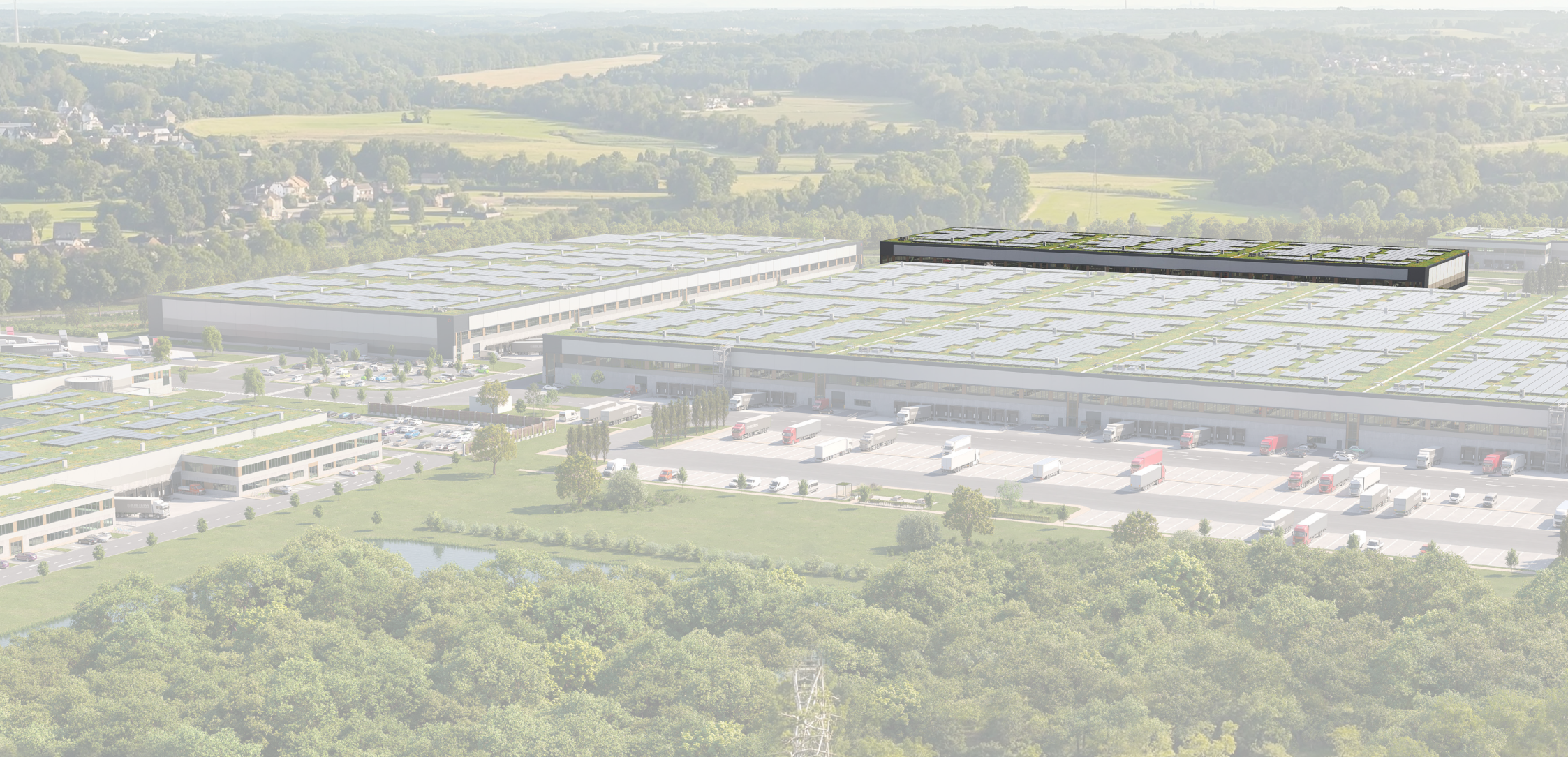


# SEGRO PARK DORTMUND



High-quality revitalisation of a former coal-fired power plant site between Castrop-Rauxel and Dortmund



Strategic location in the heart of the Ruhr area with optimal transport connections (A2, A42, A45)

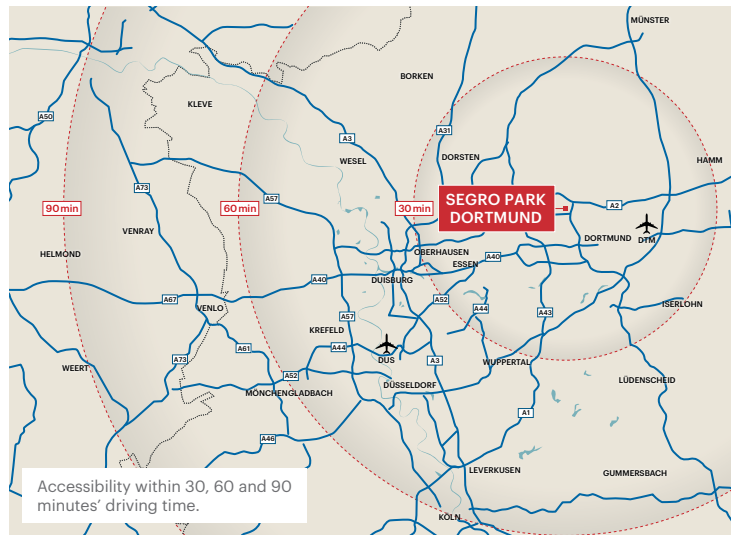
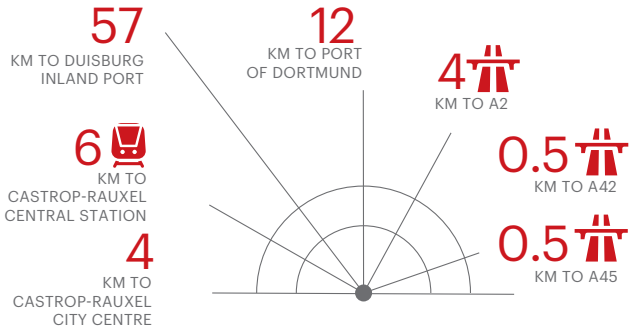


Last logistics unit with approx. 18,500 sqm



Available from September 2026

# SEGRO PARK DORTMUND



## SUSTAINABLE ASPECTS

- Green roofs
- Green facades (parking decks)
- PV plants
- EV charging stations
- Rainwater tank
- Fossil-free energy supply
- High energy building standard
- Light coloured asphalt
- Low carbon concrete
- Designated species protection areas
- Well-being: Recreation and sports areas, rest areas for truck drivers
- Aiming for DGNB Platinum certification

## SPECIFICATIONS

- Warehouse height Logistics: 12m clear height
- Flexible design
- Built-to-suit developments possible
- Offices and social areas: high quality furnishings, room layout according to tenant requirements, LED lighting
- Rail connection possible

## PLANNED LETTABLE SPACE

Unit	Warehouse	Office	Mezzanine	Total
Logistics A	15,197 sq m	696 sq m	2,596 sq m	18,489 sq m
<b>Total</b>	<b>15,197 sq m</b>	<b>696 sq m</b>	<b>2,596 sq m</b>	<b>18,489 sq m</b>

(All figures are approximate)





KONTAKT

SEGRO

SEGRO PARK  
DORTMUND



Julian Kux  
Director, Logistics,  
Germany



Julian.Kux@segro.com  
germany@segro.com



T: +49 211- 882 346 54  
M: +49 151- 544 554 33



Hier scannen für vCard  
Ihres Ansprechpartners



SEGRO Germany GmbH · Fichtenstraße 33 · 40233 Düsseldorf

[www.SEGRO.com/dortmund](http://www.SEGRO.com/dortmund)