

East Midlands Gateway Phase 2 (EMG2)

Document DCO 6.17D/MCO 6.17D

ENVIRONMENTAL STATEMENT

Technical Appendices

Appendix 17D

Baseline Study Area

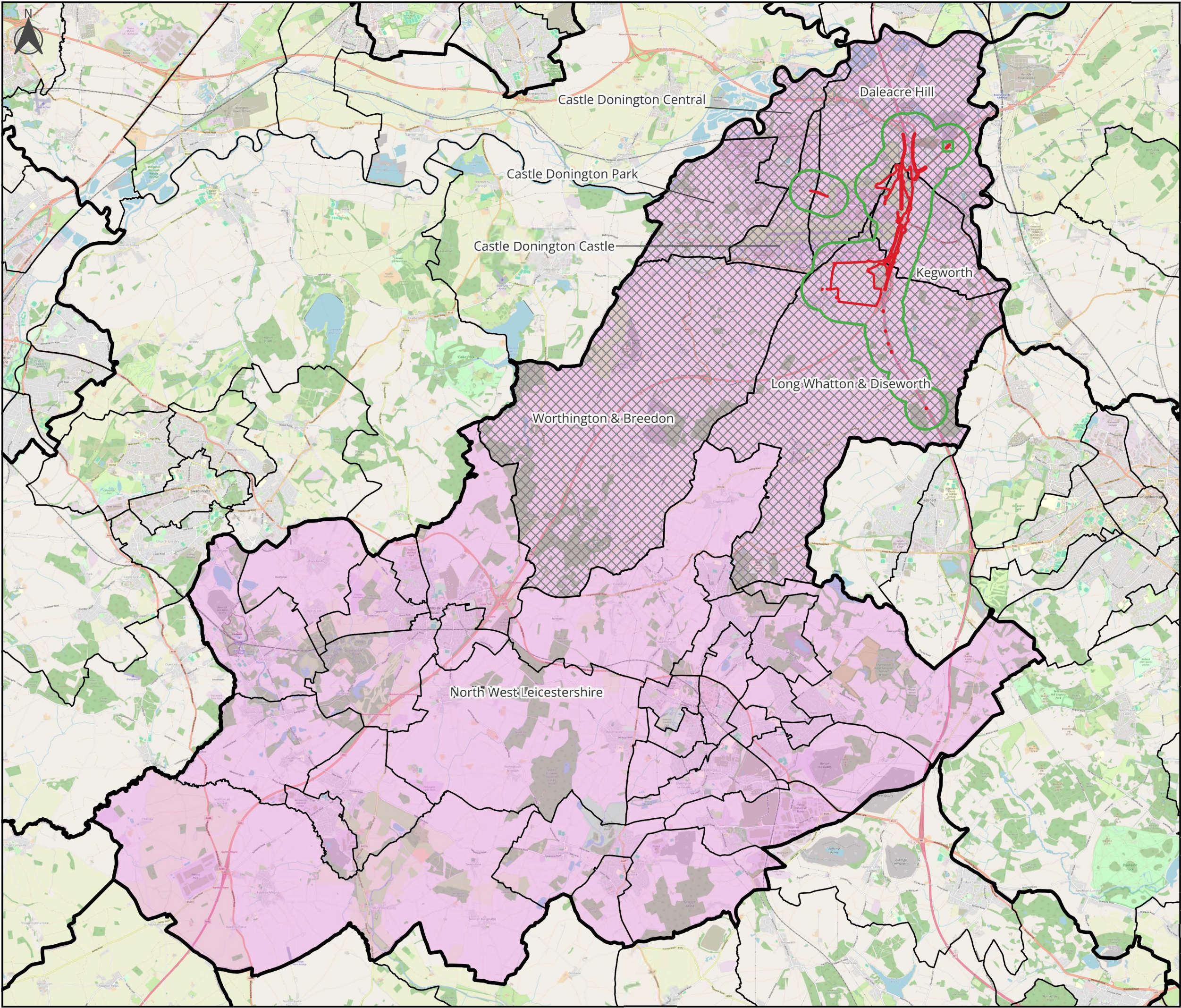
August 2025

17

The East Midlands Gateway Phase 2
and Highway Order 202X and The East Midlands Gateway
Rail Freight and Highway (Amendment) Order 202X

[SEGRO.COM/SLPEMG2](https://segro.com/slpemg2)

SEGRO



East Midlands Gateway Phase 2

Appendix 17D: Baseline Study Area

Date:	18-06-2025
Paper size:	A3
Scale:	1:146,075



Key:

- 500m buffer
- DCO Order Limits
- Ward study area
- District study area



Drawn by:	TB
Approved by:	ARB
Drawing reference:	17D
Version:	v1

© Crown copyright, license number 100024244 Savills (UK) Limited. Public sector information licensed under Open Government Licence v3.0. © Crown copyright and database right 2023. © OpenStreetMap contributors 2023. Maps Data: Google, @ 2023. Copyright © Esri. All rights reserved.

Runway East - York and Elder
50 New England Street
Brighton
BN1 4AW

