

East Midlands Gateway Phase 2 (EMG2)

Document DCO 6.13C/MCO 6.13C

ENVIRONMENTAL STATEMENT

Volume 2 Technical Appendices

Appendix 13C

EA Flood Zones Figure

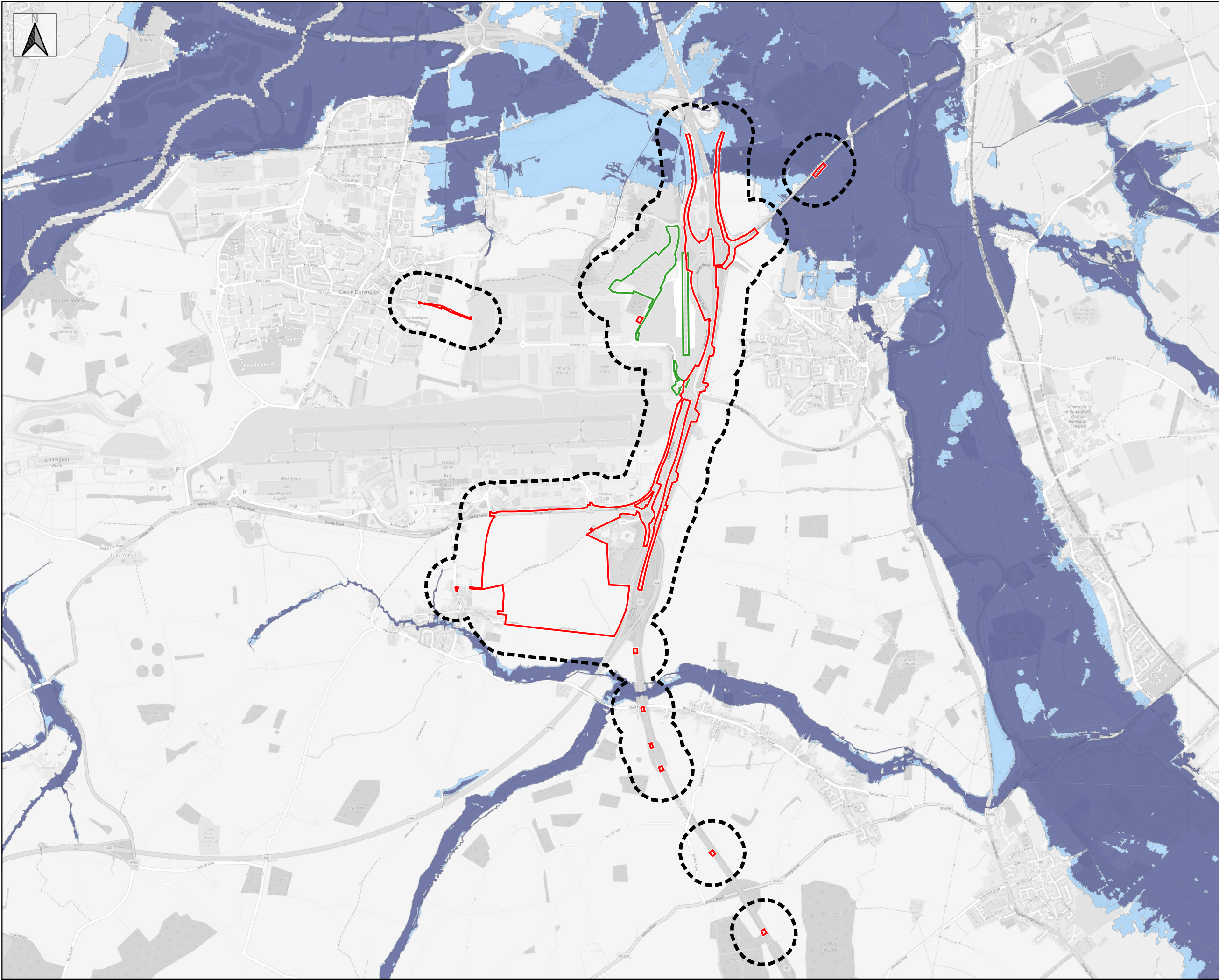
July 2025

13

The East Midlands Gateway Phase 2
and Highway Order 202X and The East Midlands Gateway
Rail Freight and Highway (Amendment) Order 202X

[SEGRO.COM/SLPEMG2](https://segro.com/slpemg2)

SEGRO

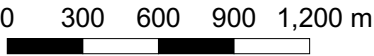


SEGRO Logistics Park East Midlands Gateway Phase 2 (EMG2)

Date: 11-06-2025

Paper size: A3

Scale: 1:30,000



- Key:
- DCO Order Limits
 - MCO Order Limits
 - ES Study Area
- Flood Zones
- Flood Zone 3
 - Flood Zone 2



EA Flood Zones

Appendix 13C

Status: PRELIMINARY

Revision: V5

Drawn by: Robin Green

Approved by: Robin Green

© Crown copyright. Public sector information licensed under Open Government Licence v3.0. © Crown copyright and database right 2025. © OpenStreetMap contributors 2025.