

**East Midlands Gateway
Phase 2 (EMG2)**

Document DCO 6.13A/MCO 6.13A

ENVIRONMENTAL STATEMENT

Technical Appendices

Appendix 13A

Flood Risk and Drainage Study Area Figure

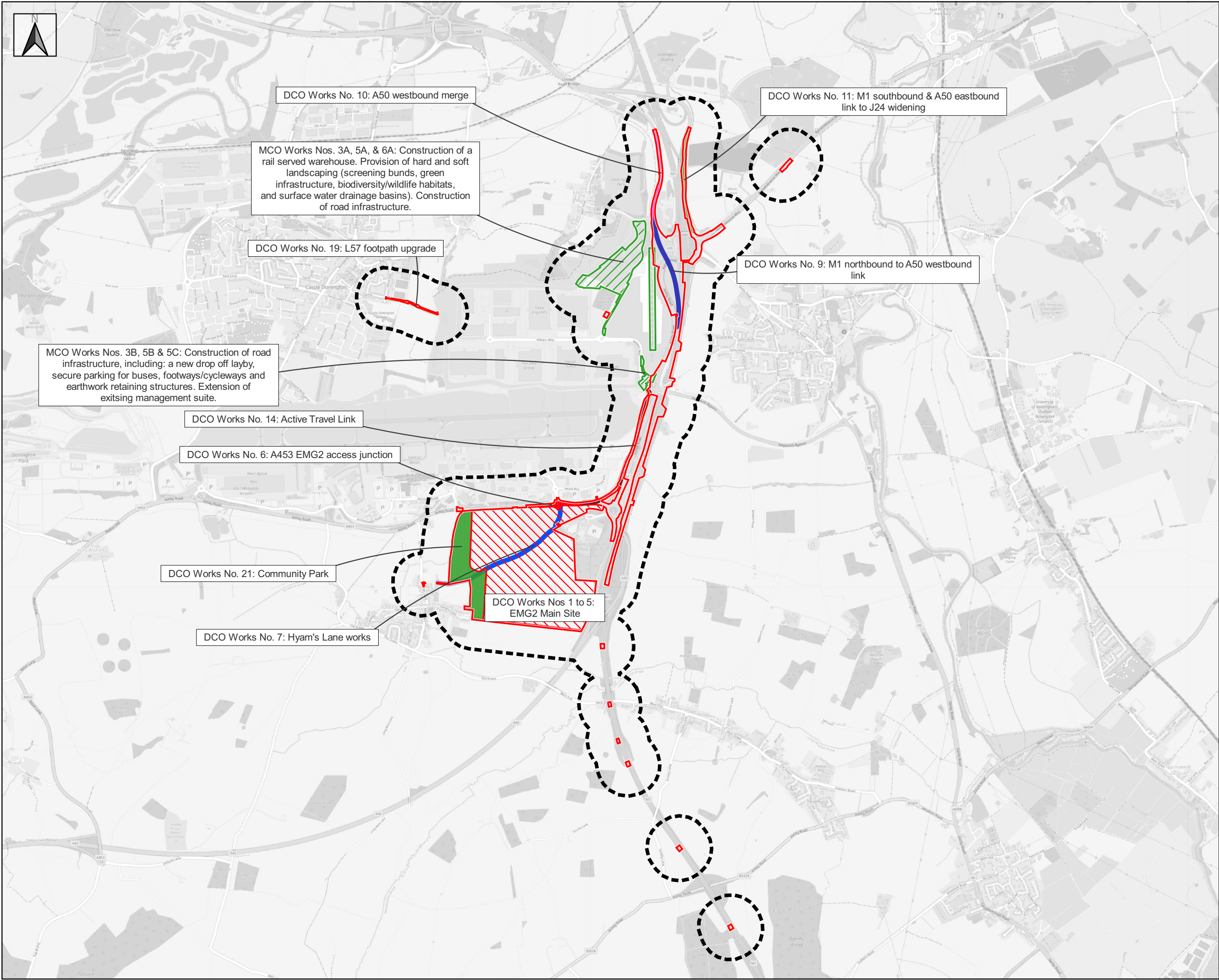
August 2025

13

The East Midlands Gateway Phase 2
and Highway Order 202X and The East Midlands Gateway
Rail Freight and Highway (Amendment) Order 202X




[SEGRO.COM/SLPEMG2](https://segro.com/slpemg2)

SEGRO



**SEGRO Logistics Park
East Midlands Gateway
Phase 2
(EMG2)**

Date: 13-08-2025
Paper size: A3
Scale: 1:30,000
0 300 600 900 1,200 m

Key:
 MCO Order Limits
 DCO Order Limits
 ES Study Area



**Flood Risk and Drainage
Study Area & Screened In
Components**

Appendix 13A

Status: PRELIMINARY
Revision: V7
Drawn by: Robin Green
Approved by: Robin Green

© Crown copyright. Public sector information licensed under Open Government Licence v3.0. © Crown copyright and database right 2025. © OpenStreetMap contributors 2025.