

**East Midlands Gateway
Phase 2 (EMG2)**

Document DCO 6.11E/MCO 6.11E

ENVIRONMENTAL STATEMENT

Volume 2 Technical Appendices

Appendix 11E

Highways Lighting Strategy

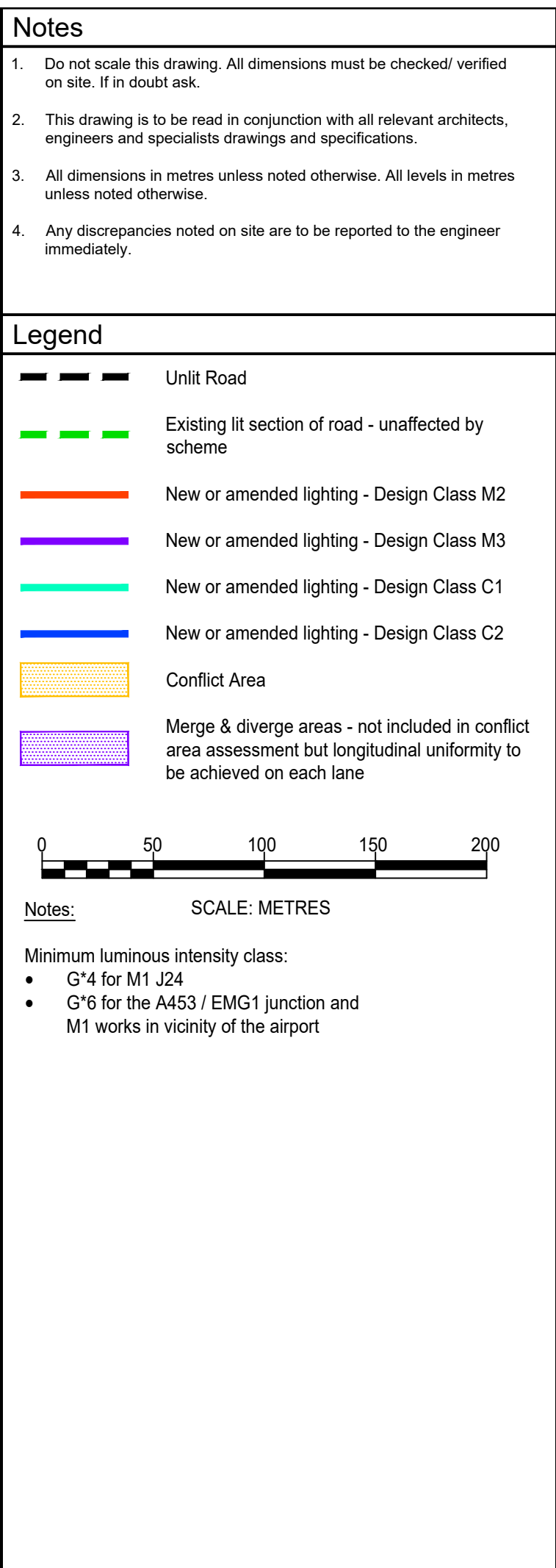
July 2025

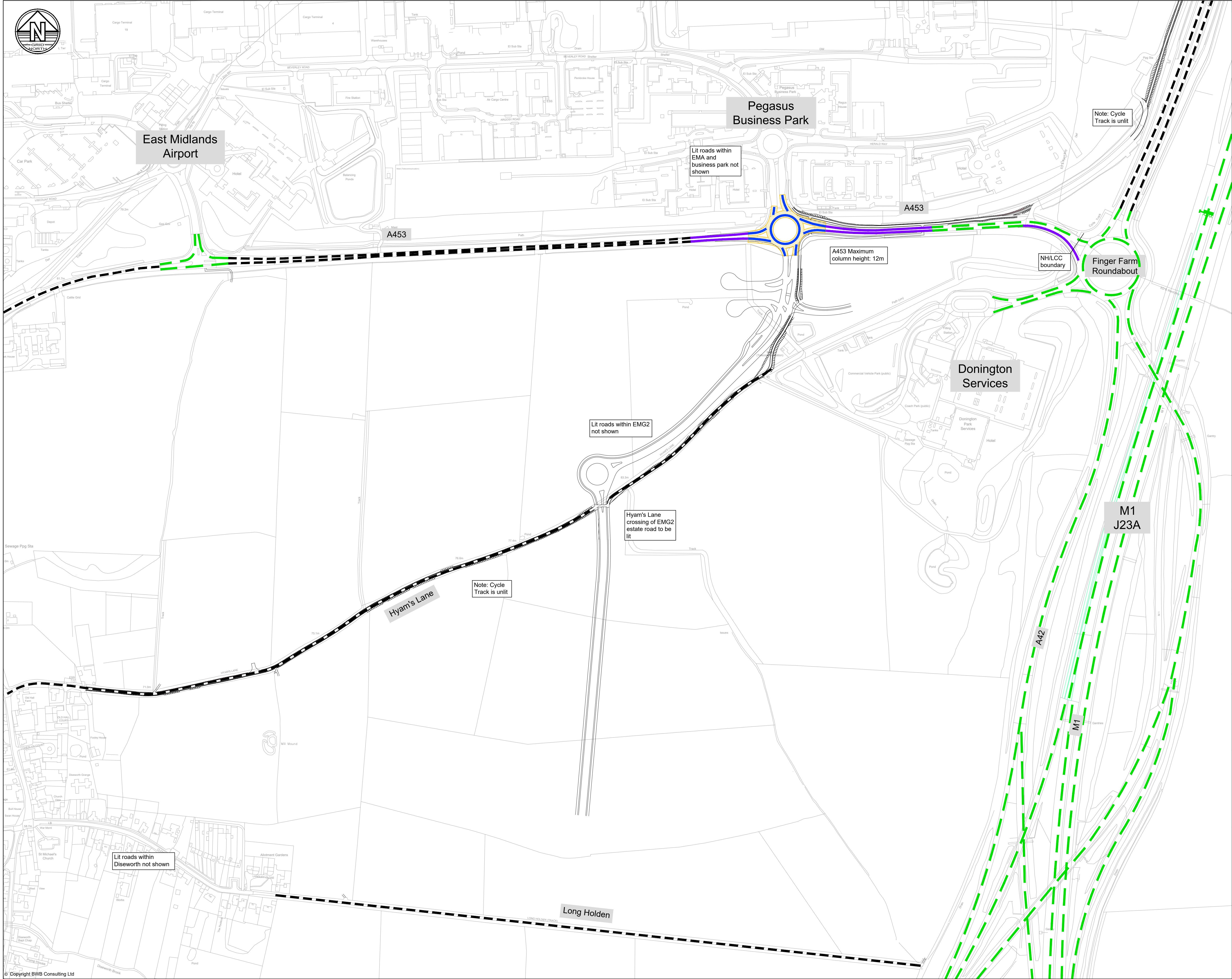
11

The East Midlands Gateway Phase 2
and Highway Order 202X and The East Midlands Gateway
Rail Freight and Highway (Amendment) Order 202X

[SEGRO.COM/SLPEMG2](https://segro.com/slpemg2)

SEGRO





Notes

- Do not scale this drawing. All dimensions must be checked/ verified on site. If in doubt ask.
- This drawing is to be read in conjunction with all relevant architects, engineers and specialists drawings and specifications.
- All dimensions in millimetres unless noted otherwise. All levels in metres unless noted otherwise.
- Any discrepancies noted on site are to be reported to the engineer immediately.

Legend

- Unit Road
- Existing lit section of road - unaffected by scheme
- New or amended lighting - Design Class M2
- New or amended lighting - Design Class M3
- New or amended lighting - Design Class C2
- Conflict Area assessment

0 50 100 150 200

Notes: SCALE: METRES

Minimum luminous intensity class:

- G*4 for M1 J24
- G*6 for the A453 / EMG1 junction and M1 works in vicinity of the airport

P02	13.06.25	Updated to latest scheme		SRH	SRH
P01	18.03.25	Preliminary Issue		JFP	SRH
Rev	Date	Details of issue / revision		Drw	Rev

Issues & Revisions

BWB

A CAF GROUP COMPANY

Birmingham | 0121 233 3322

Leeds | 0113 233 8000

London | 020 7407 3879

Manchester | 0161 233 4260

Nottingham | 0115 924 1100

www.bwbconsulting.com

Client

SEGRO

Project Title

EAST MIDLANDS GATEWAY 2 (EMG2)

Drawing Title

LIGHTING STRATEGY - LEICESTERSHIRE COUNTY COUNCIL NETWORK

Drawn:	J. Palmer	Reviewed:	S. Hilditch
BWB Ref:	220500	Date:	18.03.25
Scale@A1:	1:2500		

Drawing Status

FOR INFORMATION

Project - Originator - Zone - Level - Type - Role - Number	Status	Rev
EMG2-BWB-HLG-ZZ-DR-CH-1301	S2	P02

© Copyright BWB Consulting Ltd
J:\2022\220500-East Midlands Gateway Phase 2\Project\Delivery\01-WIP\Drawings\EMG2-BWB-HLG-ZZ-DR-CH-1301_Lighting Strategy.dwg