

**East Midlands Gateway  
Phase 2 (EMG2)**

**Document DCO 6.13D/MCO 6.13D**

ENVIRONMENTAL STATEMENT

**Volume 2 Technical Appendices**

Appendix 13D

# EA Risk of Flooding from Surface Water Mapping Figure

July 2025

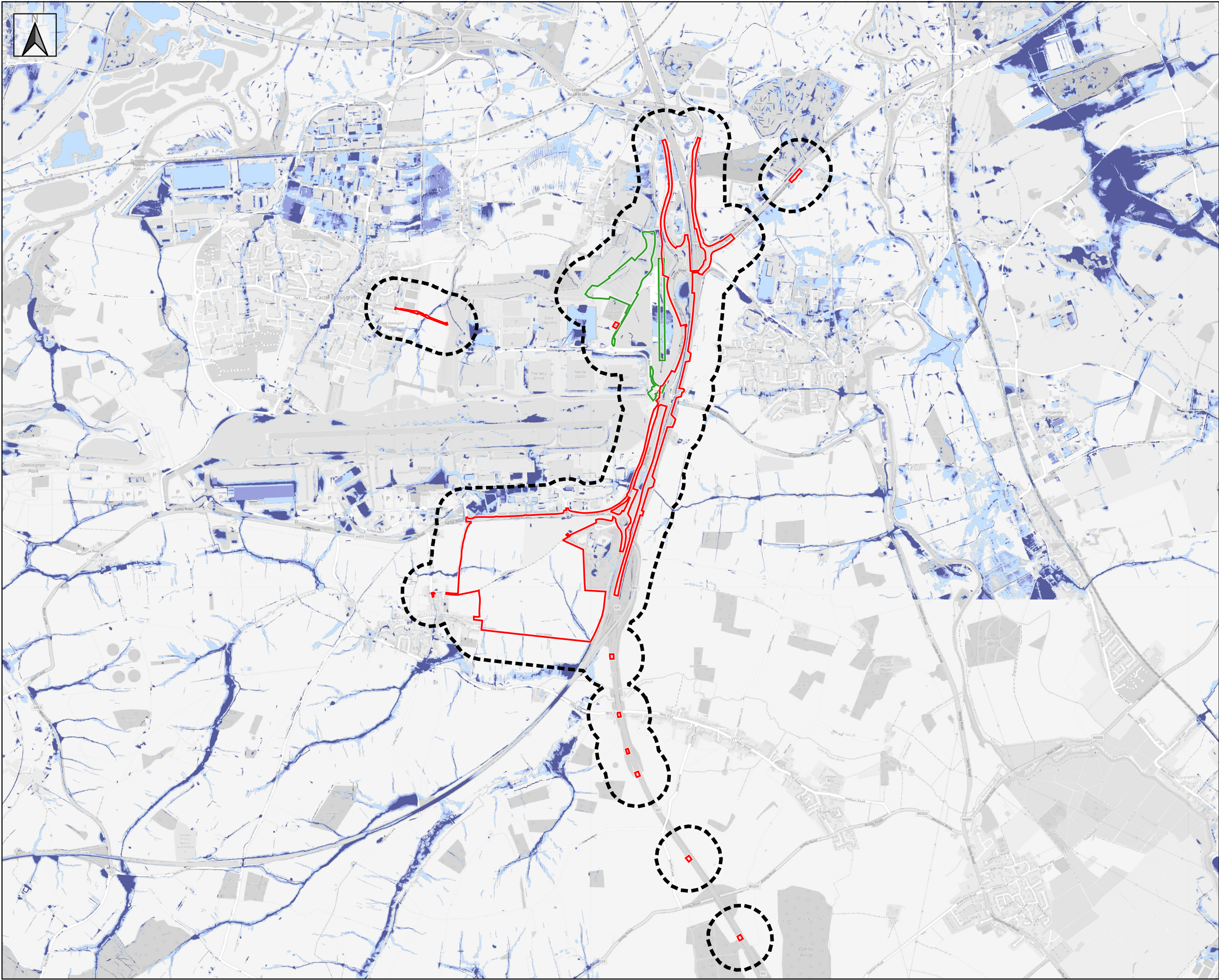
13

The East Midlands Gateway Phase 2  
and Highway Order 202X and The East Midlands Gateway  
Rail Freight and Highway (Amendment) Order 202X

[SEGRO.COM/SLPEMG2](https://segro.com/slpemg2)

**SEGRO**





**SEGRO Logistics Park  
East Midlands Gateway  
Phase 2  
(EMG2)**

Date: 11-06-2025

Paper size: A3

Scale: 1:30,000

0 200 400 600 800 m

- Key:
- DCO Order Limits
  - MCO Order Limits
  - ES Study Area
- Risk of Flooding from Surface Water
- 1 in 30-Year (High Chance)
  - 1 in 100-Year (Medium Chance)
  - 1 in 1000-Year (Low Chance)



**EA Risk of Flooding from  
Surface Water**

**Appendix 13D**

Status: PRELIMINARY

Revision: V5

Drawn by: Robin Green

Approved by: Robin Green

© Crown copyright. Public sector information  
licensed under Open Government Licence  
v3.0. © Crown copyright and database right  
2025. © OpenStreetMap contributors 2025.