

**East Midlands Gateway  
Phase 2 (EMG2)**

**Document DCO 6.12G/MCO 6.12G**

ENVIRONMENTAL STATEMENT

**Volume 2 Technical Appendices**

Appendix 12G

# Heritage Receptors

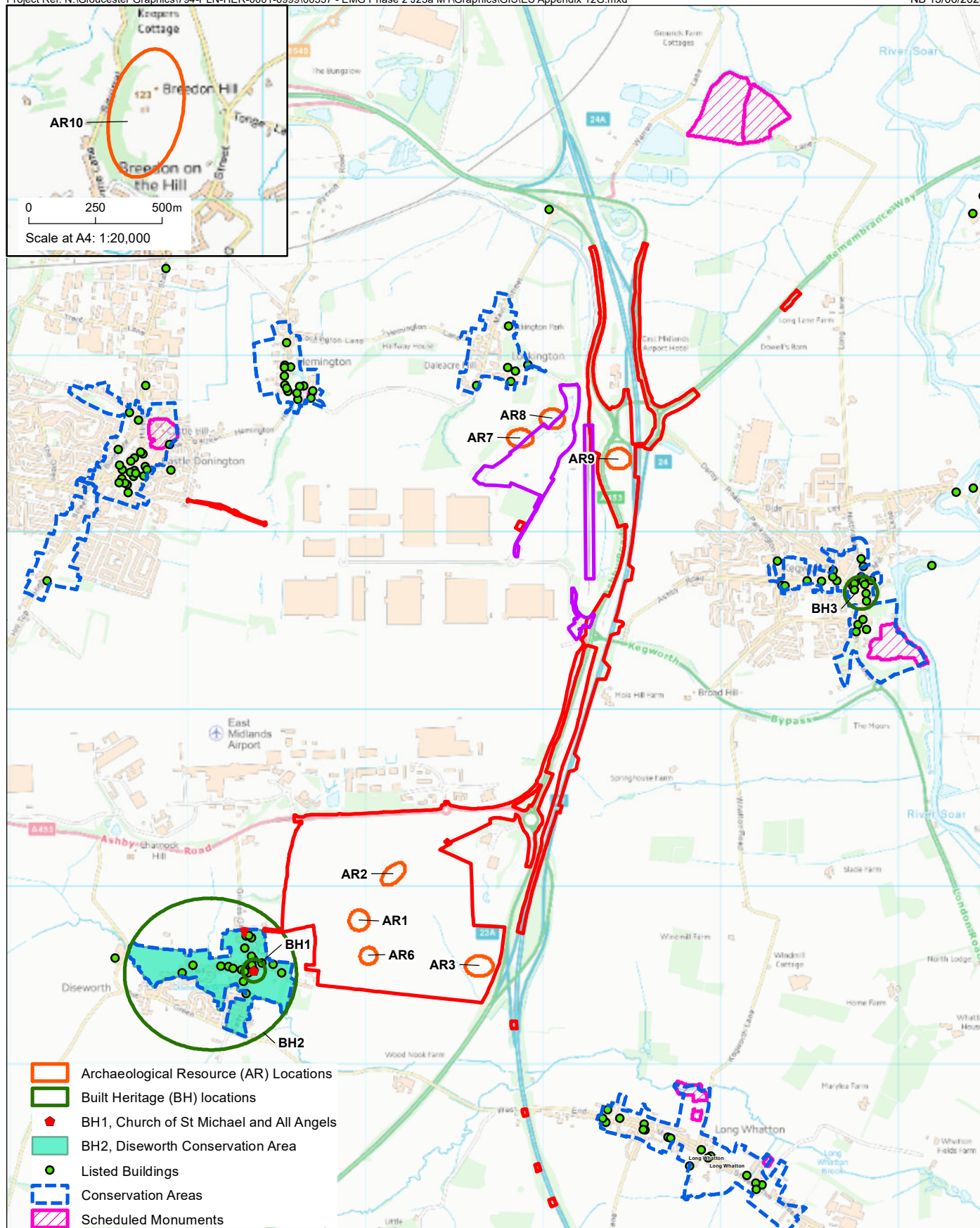
July 2025

12

The East Midlands Gateway Phase 2  
and Highway Order 202X and The East Midlands Gateway  
Rail Freight and Highway (Amendment) Order 202X

**[SEGRO.COM/SLPEMG2](https://segro.com/slpemg2)**

**SEGRO**



0 250 500m  
Scale at A4: 1:30,000

**rps**  
A TETRA TECH COMPANY

Appendix 12G

Heritage Receptors Plan