

**East Midlands Gateway  
Phase 2 (EMG2)**

**Document DCO 6.13B/MCO 6.13B**

ENVIRONMENTAL STATEMENT

**Technical Appendices**

Appendix 13B

# Surface Water Bodies Figure

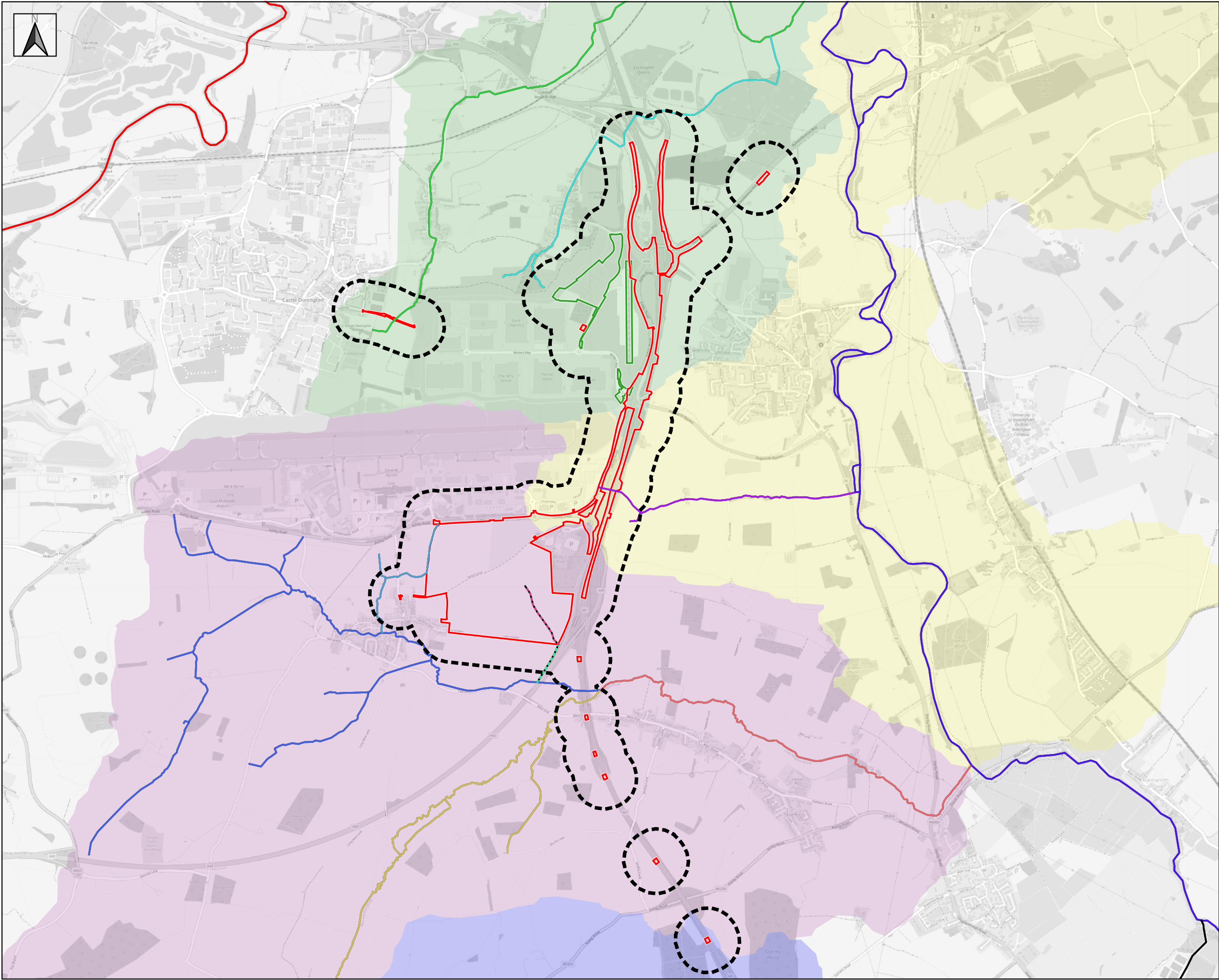
August 2025

13

The East Midlands Gateway Phase 2  
and Highway Order 202X and The East Midlands Gateway  
Rail Freight and Highway (Amendment) Order 202X

**[SEGRO.COM/SLPEMG2](https://segro.com/slpemg2)**

**SEGRO**

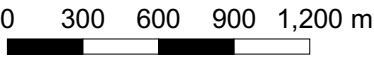


# SEGRO Logistics Park East Midlands Gateway Phase 2 (EMG2)

Date: 25-07-2025

Paper size: A3

Scale: 1:30,000



- Key:**
- DCO Order Limits
  - MCO Order Limits
  - ES Study Area
- Watercourse**
- A42 Culvert
  - Diseworth Brook
  - Drainage Ditch
  - Hemington Brook
  - Lockington Brook
  - Long Whatton Brook
  - River Soar
  - River Trent
  - The Hall Brook
  - Unnamed Tributary of the River Soar
  - Westmeadow Brook

- WFD Surface Water Operational Bodies**
- Soar from Long Whatton Brook to Trent
  - Long Whatton Brook Catchment (trib of Soar)
  - Hemington Brook Catchment (trib of the Soar)
  - Grace Dieu Brook Catchment (trib of Black Brook)



## Surface Water Bodies

### Appendix 13B

Status: PRELIMINARY

Revision: V6

Drawn by: Robin Green

Approved by: Robin Green

© Crown copyright. Public sector information licensed under Open Government Licence v3.0. © Crown copyright and database right 2025. © OpenStreetMap contributors 2025.