

**East Midlands Gateway
Phase 2 (EMG2)**

Document DCO 6.13B/MCO 6.13B

ENVIRONMENTAL STATEMENT

Volume 2 Technical Appendices

Appendix 13B

Surface Water Bodies Figure

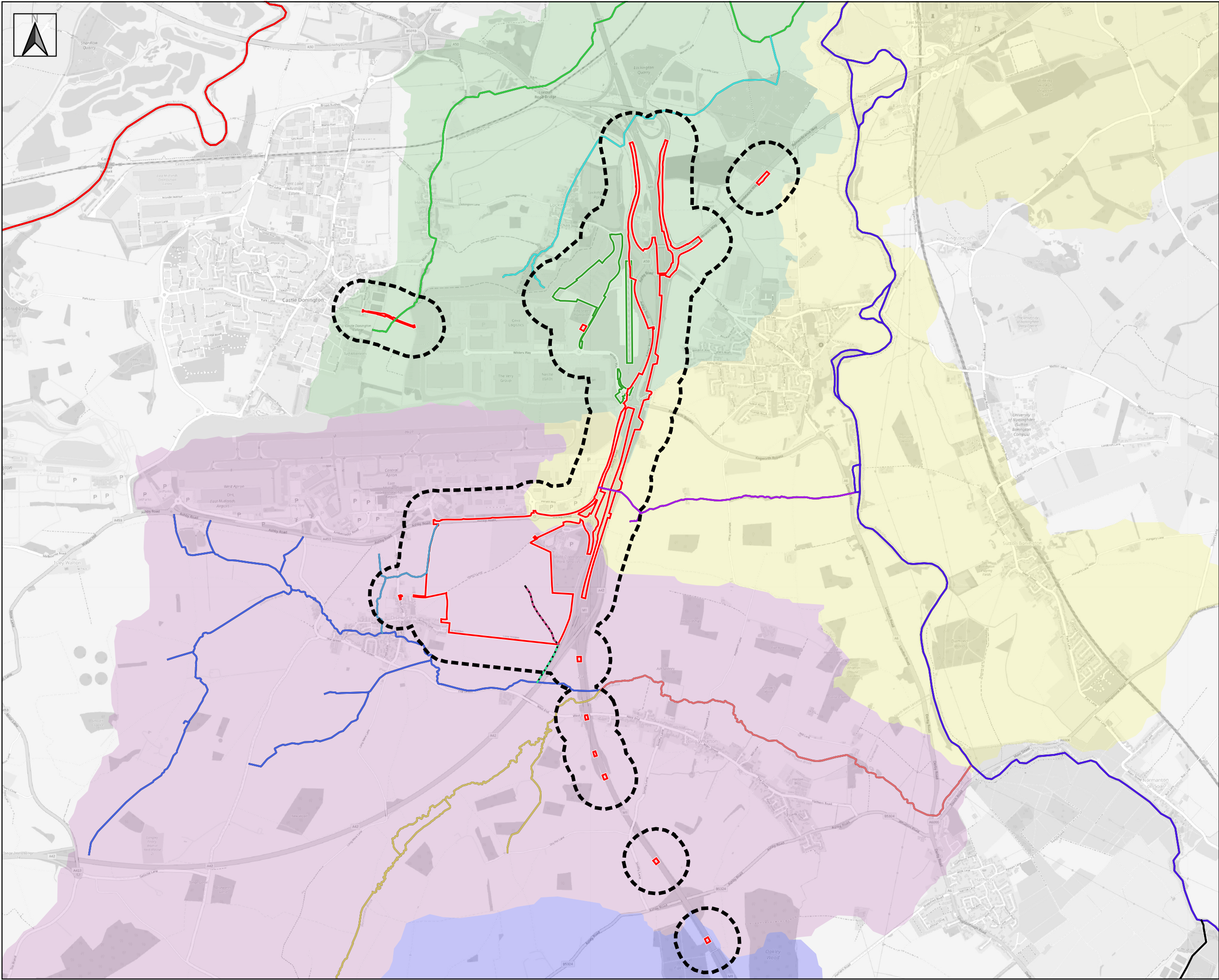
July 2025

13

The East Midlands Gateway Phase 2
and Highway Order 202X and The East Midlands Gateway
Rail Freight and Highway (Amendment) Order 202X

[SEGRO.COM/SLPEMG2](https://segro.com/slpemg2)

SEGRO



SEGRO Logistics Park East Midlands Gateway Phase 2 (EMG2)

Date: 11-06-2025

Paper size: A3

Scale: 1:30,000

0 300 600 900 1,200 m

- Key:**
- DCO Order Limits
 - MCO Order Limits
 - ES Study Area
- Watercourse**
- A42 Culvert
 - Diseworth Brook
 - Drainage Ditch
 - Hemington Brook
 - Lockington Brook
 - Long Whatton Brook
 - River Soar
 - River Trent
 - The Hall Brook
 - Unnamed Tributary of the River Soar
 - Westmeadow Brook
- WFD Surface Water Operational Bodies**
- Soar from Long Whatton Brook to Trent
 - Long Whatton Brook Catchment (trib of Soar)
 - Hemington Brook Catchment (trib of the Soar)
 - Grace Dieu Brook Catchment (trib of Black Brook)



Surface Water Bodies

Appendix 13B

Status: PRELIMINARY

Revision: V5

Drawn by: Robin Green

Approved by: Robin Green

© Crown copyright. Public sector information licensed under Open Government Licence v3.0. © Crown copyright and database right 2025. © OpenStreetMap contributors 2025.